



7 CHEQUERFIELD DRIVE
WOLVERHAMPTON, WV3 7DQ

OFFERS IN THE REGION OF £110,000
LEASEHOLD

Spacious ground floor flat situated in popular cul-de-sac off Stubbs Road ideally located for access into Wolverhampton City Centre. The property comprises entrance hall, living room, kitchen, two double bedrooms and a shower room. Access to a Communal Courtyard and Drying Area. Double Glazed and Gas Central Heating.



7 CHEQUERFIELD DRIVE

- Ground Floor Flat • Two Bedrooms • Living Room • Refitted Bathroom • Kitchen • C/H & D/G



ENTRANCE HALL

Double glazed obscure window to the side, utility cupboard and door to the living room.

LIVING ROOM

15'9" x 11'8"

Double glazed window to the front, fireplace and radiator.

KITCHEN

11'5" x 7'4"

Double glazed window to the rear, part glazed door to the rear, tiled floor, part tiled walls and a range of wall, drawer and base units with roll edge work surfaces over incorporating stainless steel sink and drainer unit with mixer tap. There is space for a cooker and fridge freezer and two useful store cupboards.

INNER HALLWAY

Airing cupboard and doors to:

BEDROOM ONE

14'11" max x 9'10" max

Double glazed window to the rear and radiator.

BEDROOM TWO

12'4" x 7'5"

Double glazed window to the front, radiator and useful storage cupboard.

SHOWER ROOM

Double glazed window to the rear, tiled floor, tiled walls, towel rail and suite comprising close coupled w.c, wash hand basin with vanity units beneath and shower enclosure.

COMMUNAL COURTYARD

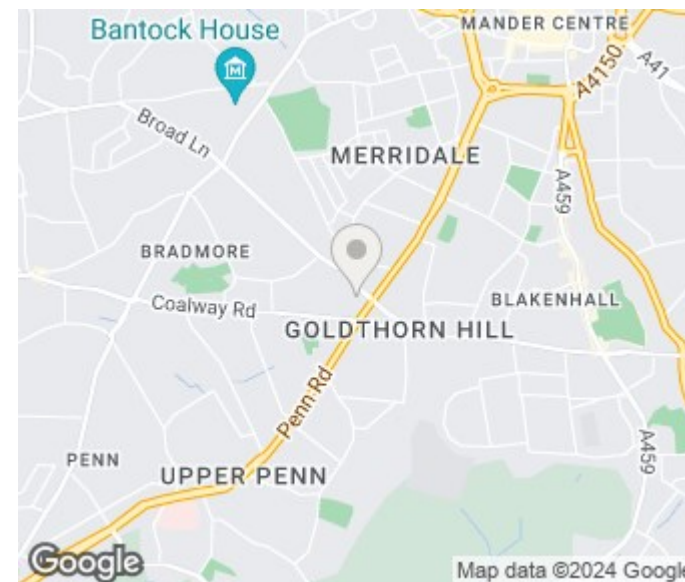
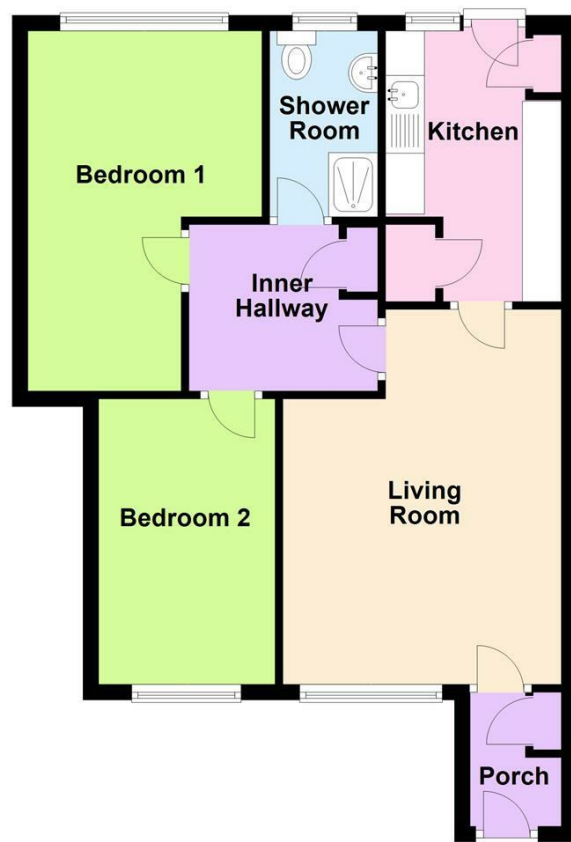
COUNCIL TAX BAND

Wolverhampton City Council - Band B

7 CHEQUERFIELD DRIVE



Ground Floor



Energy Efficiency Rating		
	Current	Potential
Very energy efficient - lower running costs		
(92 plus) A		
(81-91) B		
(69-80) C	70	78
(55-68) D		
(39-54) E		
(21-38) F		
(1-20) G		
Not energy efficient - higher running costs		
England & Wales		EU Directive 2002/91/EC



Sanders, Wright & Freeman - Sales 01902 575555
 13 Waterloo Road enquiries@swfestateagents.co.uk
 Wolverhampton www.swfestateagents.co.uk
 West Midlands
 WV1 4DJ

Agents Note: Whilst every care has been taken to prepare these particulars, they are for guidance purposes only. All measurements are approximate and are for general guidance purposes only and whilst every care has been taken to ensure their accuracy, they should not be relied upon and potential buyers/tenants are advised to recheck the measurements